






Flip-Flow *Breach Control System*

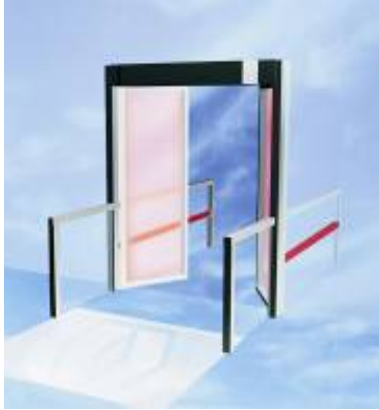


-  deters exit lane security breaches
-  maintains high throughput exit lanes
-  prevents unauthorized secure area access
-  controls object transfer to secure areas
-  increases security resource allocation options

security and safety from beginning to end...



The new record Flip-Flow provides a high level of security for a wide range of applications. The user friendly, one-way traffic system delivers a high volume throughput, without jeopardizing the need for controlled access. Featuring advanced detection and control technology, integrated with functional and reliable barrier components; the Flip-Flow provides security and safety in a practical, modular construction. The non-intrusive style keeps this system user friendly without impeding pedestrian flow. The structural design is rugged, yet easily maintained. The Flip-Flow adds value to your installation, offers reliable and repeatable performance and provides discreet security and safety.



WIDE

Larger gate with one pair of automatic doors, sensors and lateral guides.

Width: 47"

Length: 10'

▼ Purpose

Prevents access from non-secure to secure side.

▼ Use

Ideal for use as a secure emergency egress opening.

▼ Benefits

Simple and economic anti-access system, for medium security requirements.

▼ Operating modes

Flow of traffic, open, locked.



SINGLE

Glass tunnel with single pair of automatic doors and intelligent sensors.

Width: 25", 35" or 43"

Length: 10'

▼ Purpose

Channels pedestrian flow in one direction with effective anti-return feature. Offers optional left object detection inside the tunnel.

▼ Use

Effective barrier for the separation of secure and non-secure areas.

▼ Benefits

Efficient and economical, anti-access system with high security features. Compact and transparent design. Easily accessible for individuals with disabilities.

▼ Operating modes

Flow of traffic, open, locked. Optional: maintenance, cleaning



TWIN

Glass tunnel with 2 pairs of automatic doors and intelligent sensors.

Width: 25", 35" or 43"

Length: 10'

▼ Purpose

Ensures efficient flow of pedestrians in one direction only, preventing their return or the entry of any unauthorized person from a non-secure side. Optional feature: surveillance of interior space to prevent the passage of objects to the secure side and detect objects left in the passage area.

▼ Use

Effective barrier for the separation of secure and non-secure areas.

▼ Benefits

High security, anti-access system with maximum security features. Compact and transparent design. Easily accessible for individuals with disabilities.

▼ Operating modes

Flow of traffic, open, locked, interlock, maintenance and cleaning.

Optional: Extended corridor with swing gates for increased security and pedestrian control.

Key Features

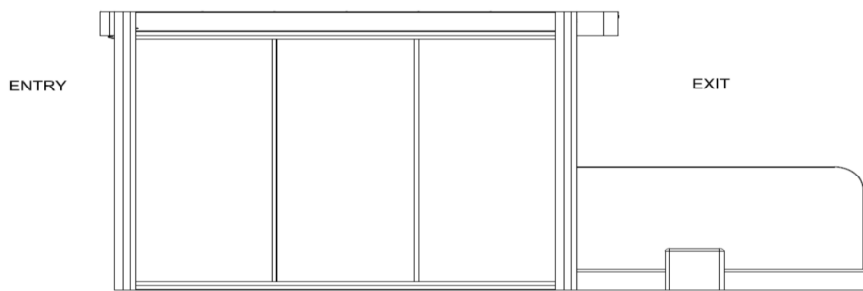
- Provides multiple options to conform to desired level of security
- Allows the reallocation or exclusion of security guard personnel
- Easily fits into existing pedestrian exit corridors
- I/O modules allows remote monitoring and control
- Interface for parameter settings, error codes and alarms
- Selectable modes for operation, cleaning and maintenance
- Integrates to existing TCP/IP networks (optional)

Facts Security

▼ The **TWIN** version offers the highest security level utilizing a series of infrared sensors in combination with volumetric detection to prevent unauthorized access. The sensor system also scans the interior of the door system to detect the presence of objects left in or passed through the corridor.

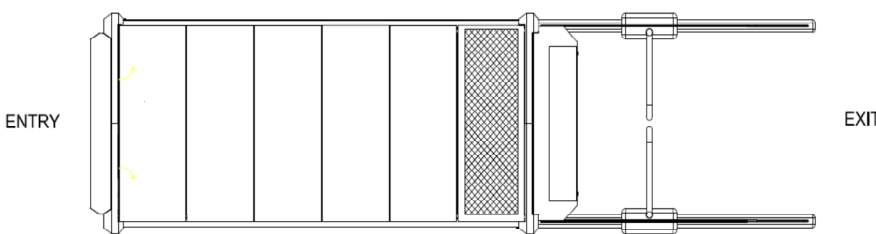
▼ The Flip-Flow "**Twin Extended**" offers the same features as the "Twin" version, but includes an additional barrier on the non-secure side. The gate design adds one more layer of security to deter anyone from attempting to enter from the non-secure side. In proper operation, the gate is closed when there is no pedestrian flow going through the exit and serves as a warning barrier to prevent unauthorized access through the door system.

▼ For applications requiring an extremely high volume of throughput, multiple units can be placed side by side to handle peak pedestrian flow. Each individual Flip Flow is controlled separately, so the units not in use can be locked secure and unused during lower volume periods.



Elevation view:
TWIN Extended
includes additional
gate barrier.

Length: 17' 4"

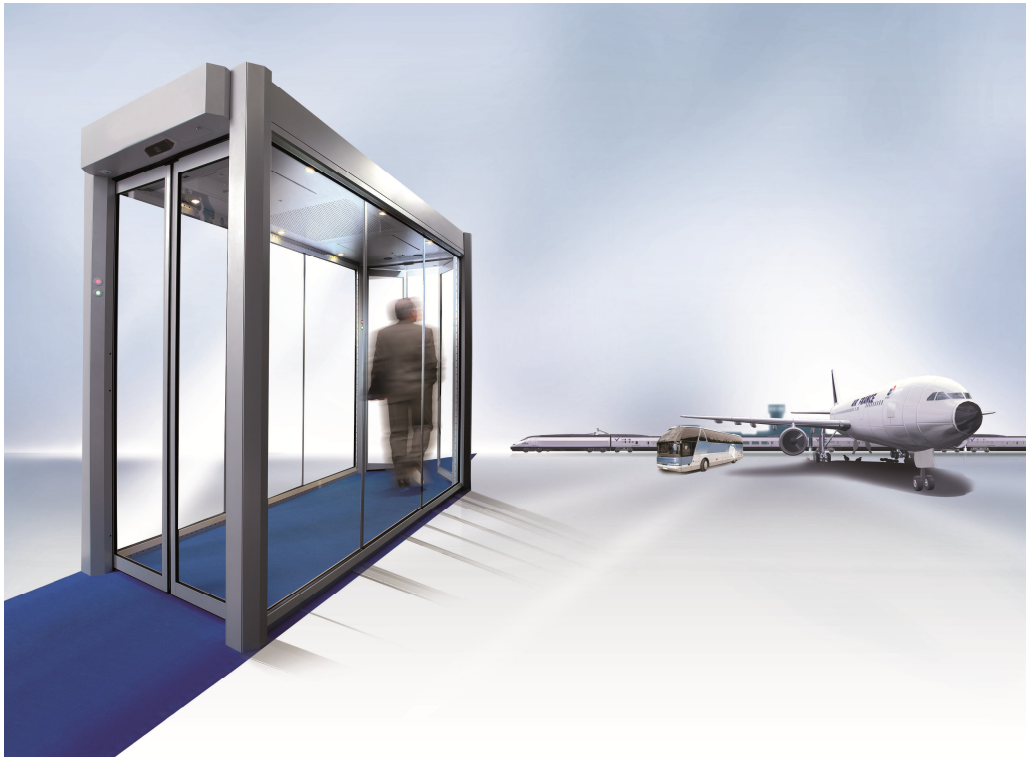


Plan view:
TWIN Extended
includes additional
gate barrier.

Length: 17' 4"



The record **Flip-Flow** family, the first choice for reliability, safety and security.



Our top priority is your complete satisfaction with the quality of our products and services.

By this we mean:

- ▼ Individual, professional advise in choosing security access solutions
- ▼ A wide range of products to meet any security automation requirement
- ▼ Contemporary designs which are compatible with any architectural style or plan

Twenty-two subsidiaries of record in Europe, Asia and the United States, offer over 50 years of experience in manufacturing, sensor technology, electronics and software development for automatic door systems and related products. Satisfied customers all over the world have chosen record as their partner, the right partner for your installation.

